



ARTIFICIAL INTELLIGENCE UPDATE FOR SENATE

ASIM ALI, PH.D.

MARCH 18, 2025



AUBURN



STUDENTS, EMPLOYERS, AND AI

CENGAGE 2024 GRADUATE EMPLOYABILITY REPORT

COURSE INTEGRATION

70%

Graduates who believe basic generative AI training should be integrated into courses.

WORKFORCE PREP

55%

Graduates who said their degree programs did not prepare them to use the new technology tools in the workforce.

EMPLOYER EXPECTATIONS

62%

Employers that believe both prospective and current hires should have foundational knowledge of Gen AI.



COMPARING FACULTY & STUDENT AI USAGE IN U.S.

STUDIES BY PEARSON & ITHAKA S+R

STUDENT USAGE TO IMPROVE GRADES

51%

Spring 2024 students who say AI has helped them get better grades

- 42% brainstorm ideas
- 41% summarize class notes
- 43% create study materials

FACULTY FAMILIARITY

40%

Two out of five faculty are familiar with AI.

TEACHING & LEARNING

14%

Faculty who are confident in their ability to use AI in their teaching.

18% say they understand the implications of Gen AI on their teaching.

Microsoft Copilot Chat

- All users have access to Microsoft Copilot Chat for free
- Login at <https://copilot.microsoft.com>

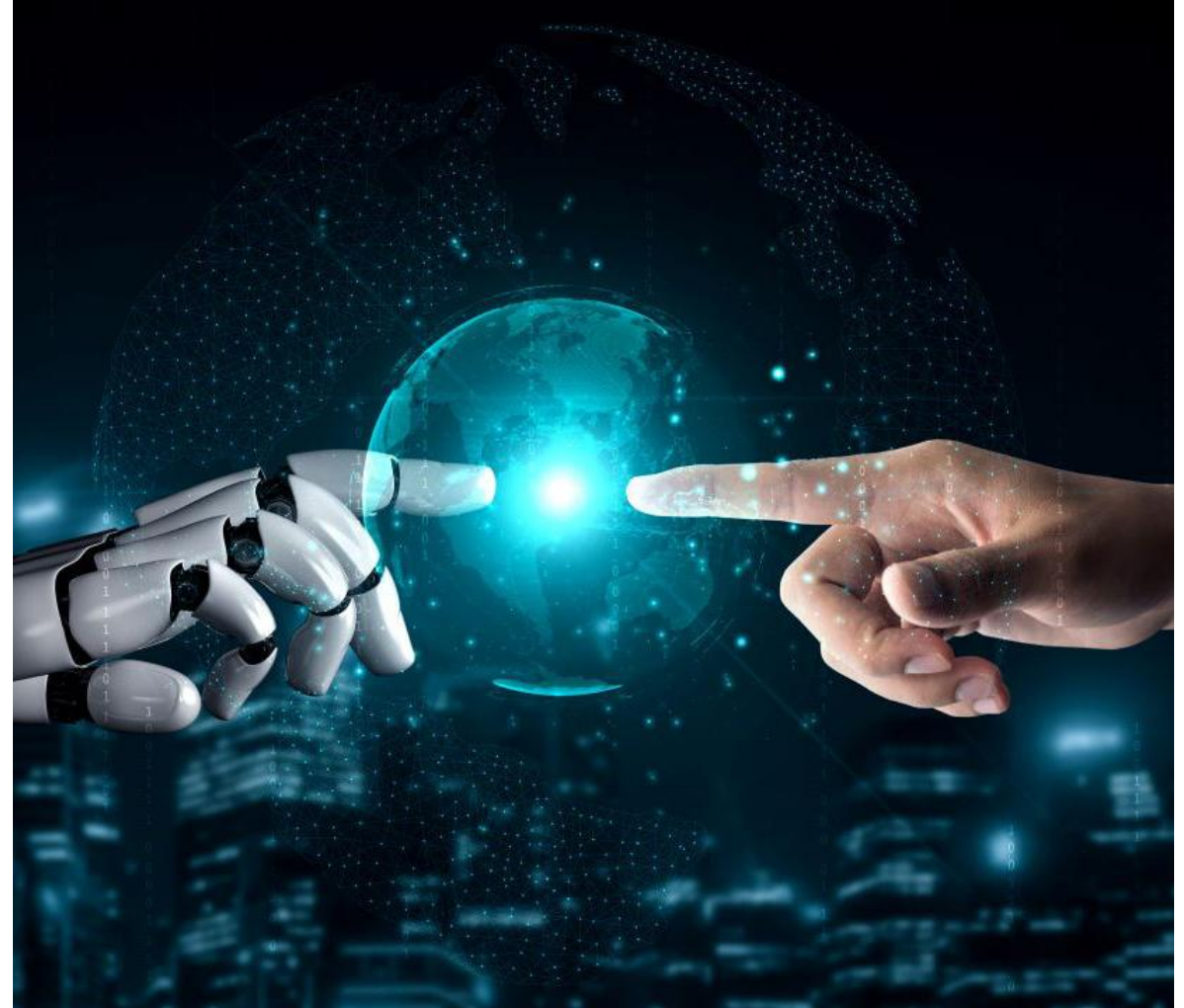


Microsoft Copilot 365

- Copilot with insights from *your* emails and files
- Copilot built-in to Outlook, Teams, Word, Excel, and PowerPoint
- A few hundred licenses left until Sept. 30, 2025
- Initial pilot funded in 2024 by Biggio, OIT, and Business & Administration
- Funded for FY 2025 with Mission Enhancement Funds

MICROSOFT COPILOT 365 - SIGN UP TODAY

- Faculty and staff can sign up for Microsoft Copilot 365
- Complete training in ElevatED & Gain access
- To register for the training, visit <https://aub.ie/copilottraining>



MICROSOFT COPILOT 365 - SIGN UP TODAY

- TIGER Tech Leaders stand for **T**echnology, **I**nnovation, **G**rowth, **E**fficiency, and **R**esults.
- Engaged 440 users, representing 34 Divisions and 142 Departments
- Program managed by Moriah Kent, AI Implementation Specialist in HRD

	MS Global Benchmarks <i>n=297</i>	Spring 2025 Survey <i>n=183 (42% users)</i>
Increased Productivity Gains	70%	80%
Increased Quality of Work	68%	84%
Reduced Mental Effort	73%	83%
Increased Speed	73%	83%



AUBURN UNIVERSITY
ARTIFICIAL INTELLIGENCE INITIATIVE

- **Hari Narayanan**
Administrative Lead
- **Gerry Dozier**
Technical Lead

Committees	Chairs/Co-Chairs
Research	Jeff Ku
Computational Infrastructure	Shannon Price, Denise Baker, Bradley Morgan, Kelly Price
Education	Asim Ali
AI Ethics	Cheryl Seals Joan Harrell
Advanced AI Think Tank	Adam Jortner



- aub.ie/aiau-forum
- Fridays, 10:00 AM CST
- Guest lectures by Auburn faculty and invited guests
- Virtual or in-person attendance open to all



TEACHING WITH AI - CANVAS COURSE

REVISED - FIVE ENGAGING MODULES / ABOUT 1 HOUR PER MODULE



BROAD AVAILABILITY

ALABAMA COMMUNITY COLLEGE SYSTEM PARTNERSHIP

Auburn partners with Alabama Community College System to advance AI teaching and learning

Published: February 16, 2024



BROAD AVAILABILITY: EDUCAUSE

COURSE AVAILABLE THROUGH EDUCAUSE

- Facilitated "Teaching with AI" course taught over two weeks every month



DIGITAL BADGE FOR COMPLETION



NATIONAL AWARD

2024 UPCEA NATIONAL AWARD FOR BEST NON-CREDIT ONLINE COURSE

“Teaching with Artificial Intelligence” course receives Outstanding Program Noncredit Award at 2024 UPCEA Annual Conference

Written by: [Audrey Lowry](#) | Office of the Provost

Published: April 05, 2024



THE RESULTS

COURSE ENROLLMENT

120+

INSTITUTIONS

14,000

LEARNERS



GENERATIVE A.I. BOTS FOR YOUR CLASS

- Currently, several faculty are working with the Biggio Center to deploy chatbots in their classes via Canvas.
- Uses Microsoft Copilot Studio.
- Interested? Contact biggio@auburn.edu to learn more.





Auburn Online

A Guide to AI Enhanced Learning

- **Topics**
 - Ethics of AI
 - How-To: use cases for tutoring, code generation, media generation, other academic uses
 - Instructors: Import into your Canvas courses
 - Students: Access via web
- <https://aub.ie/howtoAI>

GENERATIVE AI SYLLABUS STATEMENTS

RED / YELLOW / GREEN OPTIONS

- <https://aub.ie/ai-syllabus>
- Option 1: Open-use with attribution
- Option 2: Permitted when assigned and specifically allowed
- Option 3: Not allowed on assignments, but okay as study tool

IT'S IN THE
SYLLABUS



GENERATIVE AI GUIDANCE

OFFICE OF AUDIT, COMPLIANCE, AND PRIVACY



- <https://aub.ie/ai-guidance>
- “Operational data” or “confidential data” should never be shared with public generative AI tools without legal agreements
- “Public data” can be used with some restrictions in mind.

A WORD ON AI DETECTION FOR STUDENT WORK



QUESTIONS?

Asim Ali, Ph.D.

Executive Director, Biggio Center at Auburn University

LinkedIn: <https://aub.ie/Asim>

Email: asim@auburn.edu

asim
CONVERSATIONS



AUBURN